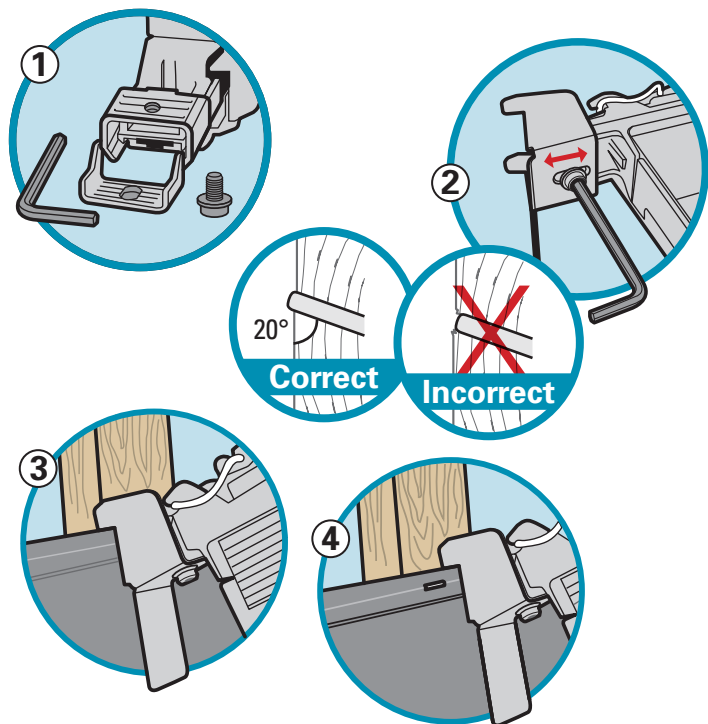


How to Use the Maibec em+® Stapler Guide

The Maibec em+® stapler guide is compatible only with **HITACHI™*** N5008 (AC 1" and AC 2"), **MAKITA™*** (AT1150A), **SENCO™*** SNS41 and **SENCO™*** discontinued staplers SNS50XP, SNS45XP and SNS44XP.

Use 2" length resin-coated stainless steel 7/16" crown staples; 2 staples per furring strip.

- 1** Remove the stapler's original stop.
- 2** Attach the Maibec em+® guide to the stapler and adjust the staple depth.
The head of the staple should not sink into the siding but sit flush on the surface.
- 3** Use the guide to align the stapler with the left side of the furring strip.
Press the top part of the guide's bracket flush against the top of the siding (tongue). This will position the staple directly on the siding's staple line.
Activate.
- 4** Repeat the operation on the right side, which will ensure the required 3/4" space between the two staples.



WARNING!

If you are installing Maibec em+® siding in our Modern, Contemporary, Cove or Channel profiles, the bracket must be flush against the top of the siding for proper staple positioning.

For complete fastening and installation instructions, consult the Maibec em+® siding installation guide on our website at maibec.com.

