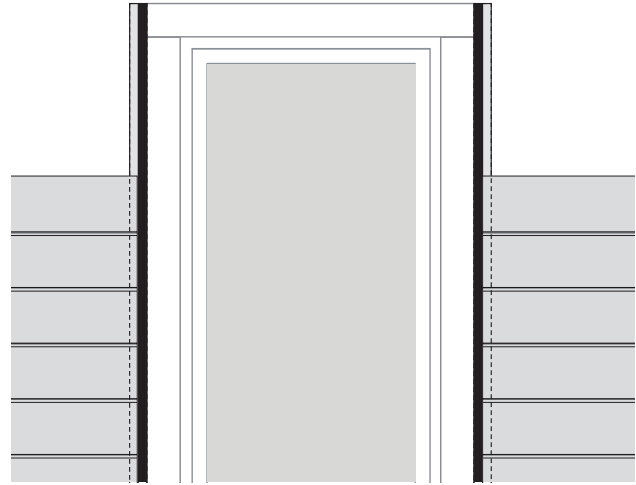
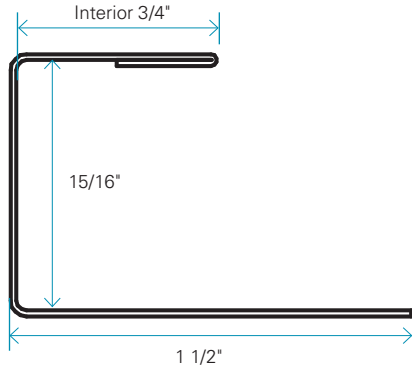


"C" Transition Trim



ACTUAL DIMENSIONS	LENGTH	INSTALLATION
3/4" x 15/16"	10'	Vertically

General Specifications

"C" transition trim, used for finition between Maibec genuine wood siding and openings. Does not require the application of sealant between the transition trim and the siding.

PACKAGING

- Pieces of 10'

AVAILABLE COLOUR

- Black

For exterior use only.

INSTALLATION

- Leave a spacing of 1/4" between the lap siding and the bottom of the "C" transition trim.