

Touch-Up Requirements

Maibec Genuine Wood Siding Read this before applying

Apply touch-up stain to all cut or planed surfaces and to all bare wood.

1. Storage

Winter: Touch-up stain must always be kept at room temperature (max 38°C/100°F)

Summer: Keep out of direct sunlight.

2. Tools

For shingle or natural tones siding touch-ups, use the Maibec touch-up applicator (illustr. 1). You need one bottle for shingle touch-ups and two (2) bottles for natural tones siding touch-ups – **one bottle for the siding CUTS, one bottle for the NAILS**. For shingle touch-ups or siding touch-ups when using touch-up stain in a can (illustr. 3), use a polyester, nylon, or any synthetic applicator with firm bristles approved for water-based coatings.

3. Stain Preparation

- When using the Maibec shingle or natural tones siding touch-up applicator shake 20 to 30 times to make sure liquids are homogeneously blended. Repeat over the course of a day's work.
- When using touch-up stain in a can, stir for at least 5 minutes using a wooden spatula, making certain to scrape the sides and the bottom of the can until it is homogeneously blended. This should be repeated a couple of times (or as needed) over the course of a day's work.

4. Application

For maximum adherence, visible touch-ups should be done at temperatures above 10°C/50°F.

- To touch-up small areas such as nail heads or scratches, use the natural tones NAIL applicator or an applicator no larger than the intended surface (illustr. 1 and 2). Carefully dab the area.
- To entirely seal the wood, use the applicator for CUTS or a brush of adequate width to apply a sufficient amount of touch-up stain to all cut or planed surfaces and to all bare wood, even if it will not be visible once the siding is installed (illustr. 1 and 3). We recommend you touch-up products before installing them.
- Do not use wide brushes that could cause drips and give poor results (illustr. 4).

"TOUCH-UP STAIN" IS ONLY MEANT TO BE USED IN THE AREA IN NEED OF IT. IT MUST NOT, UNDER ANY CIRCUMSTANCE, BE APPLIED OVER NON-DAMAGED FACTORY COATED MATERIAL. DIFFERENCES IN TONE DUE TO THE MISAPPLICATION OF TOUCH-UP STAIN WILL NOT ALWAYS APPEAR IMMEDIATELY, EMERGING ONLY AFTER REPEATED ULTRAVIOLET EXPOSURE.

MAIBEC® IS NOT LIABLE FOR ANY VARIATION IN COLOUR DUE TO THE INCORRECT APPLICATION OF TOUCH-UP STAIN. MAIBEC® WILL NOT BE LIABLE FOR ANY VARIATIONS IN SHEEN OR TONE AND FOR CHALKING.

SHINGLE OR NATURAL TONES SIDING TOUCH-UP APPLICATOR

Illustration 1



TOUCH-UP STAIN IN A CAN

Illustration 2

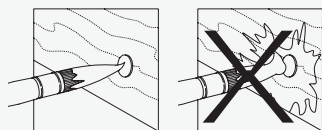


Illustration 3

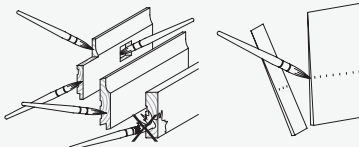


Illustration 4

